

Oracle FLEXCUBE OBIEE Reports
Oracle FLEXCUBE Universal Banking
Release 14.4.0.0.0
[May] [2020]



Table of Contents

- 1. FLEXCUBE OBIEE REPORTS SETTING..... 1-1**
- 1.1 INTRODUCTION 1-1
- 1.2 CREATION OF USER WITH ADMINISTRATOR RIGHTS 1-1
 - 1.2.1 *Steps to create user* 1-1
- 1.3 STEPS TO IMPLEMENT ACCESS RESTRICTIONS TO USER 1-6
- 1.4 UPDATE THE USER ID IN CSTB_PARAM 1-12
- 1.5 INTEGRATION OF OBIEE INTO FLEXCUBE USING IFRAME 1-12
- 1.6 WRITEBACK XML DEPLOYMENT 1-13
- 1.7 SERVER FILE CHANGES 1-14
- 1.8 CREATION AND MAINTENANCE OF BPEL URL..... 1-15
 - 1.8.1 *Steps for creation of BPEL url.* 1-15
 - 1.8.2 *Steps for Maintenance of BPEL url.* 1-17
- 1.9 DISABLE CACHE 1-17
- 1.10 RESTARTING BI COMPONENTS USING EM SERVER..... 1-18

1. FLEXCUBE OBIEE Reports Setting

1.1 Introduction

This document covers the setting required to launch OBIEE reports from within FLEXCUBE. The various topics covered are:

- Creation of User with Administrator Rights
- Steps to implement access restrictions to user
- Update the User Id in CSTB_PARAM
- Integration of OBIEE into Flexcube using IFrame
- Writeback XML Deployment
- Server file changes
- Creation and Maintenance of BPEL url.
- Disable Cache
- Restarting BI Components using EM Server

Note: If OBIEE is on SSL, valid SSL certificate is essential to invoke OBIEE screens from Oracle FLEXCUBE. If valid SSL certificate is not available, then the browser will show an error message when you try to invoke an OBIEE screen.

1.2 Creation of User with Administrator Rights

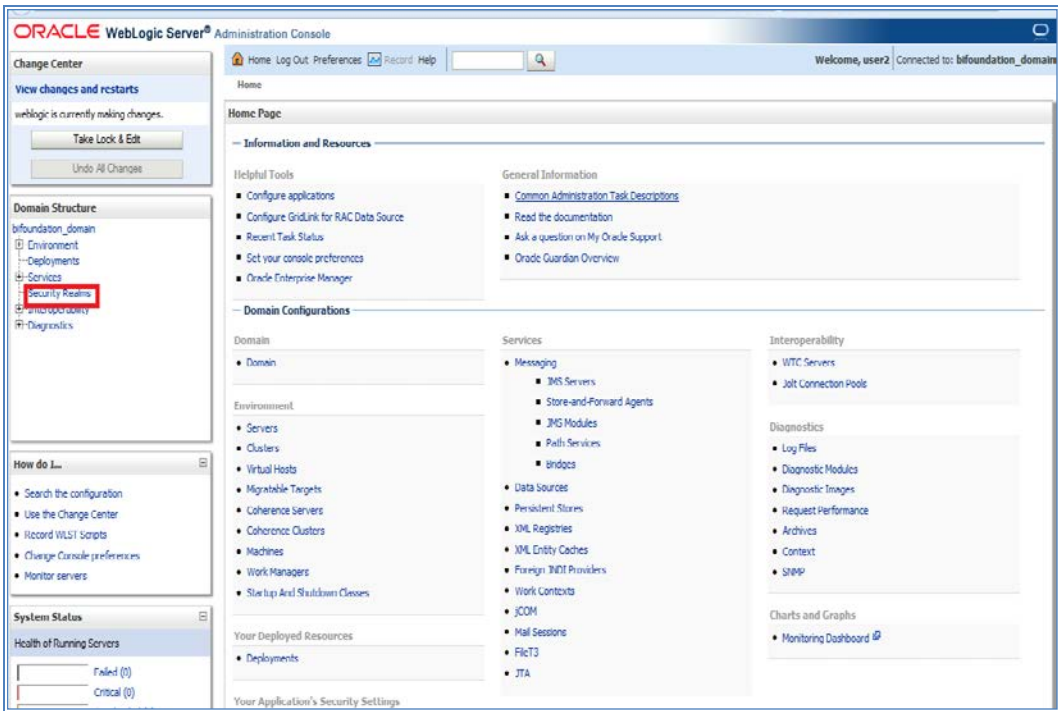
1.2.1 Steps to create user

Create 'weblogic' user if it's not created already in the OBIEE instance you are using.

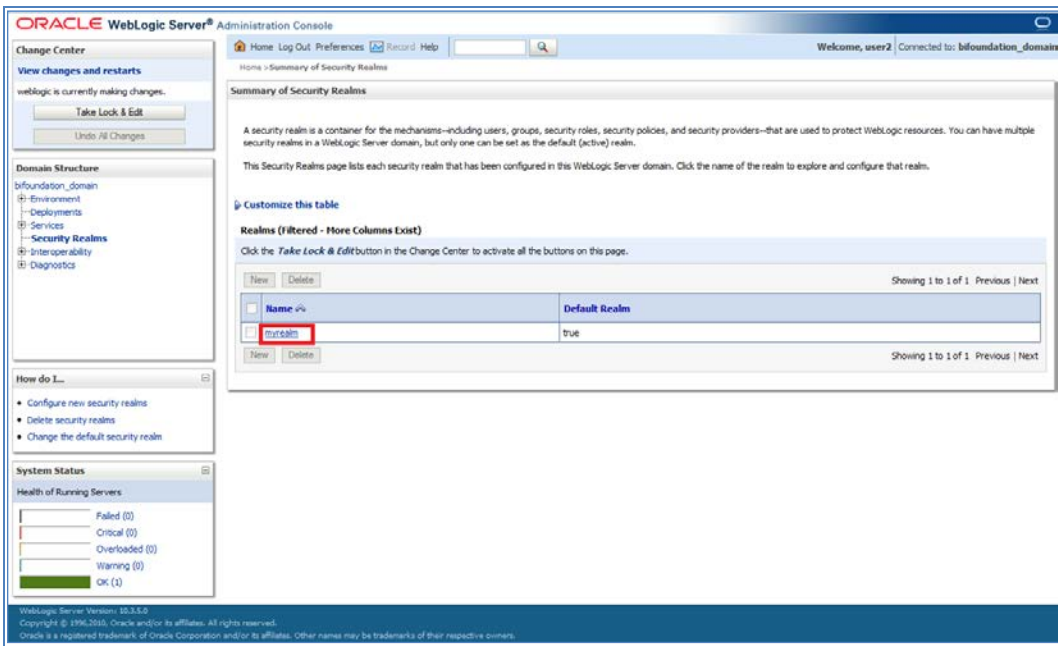
1. Login to OBIEE Admin console with admin credentials



2. Once logged in click on security realms in the page



3. Next click on my realms as shown below



4. Next click on user and groups tab

ORACLE WebLogic Server® Administration Console

Home > Summary of Security Realms > myrealm

Settings for myrealm

Configuration **Users and Groups** Roles and Policies Credential Mappings Providers Migration

General RDBMS Security Store User Lockout Performance

Click the **Take Lock & Edit** button in the Change Center to modify the settings on this page.

Save

Use this page to configure the general behavior of this security realm.

Note:
If you are implementing security using JACC (Java Authorization Contract for Containers as defined in JSR 115), you must use the DD Only security model. Other WebLogic Server models are not available and the security functions for Web applications and EJBs in the Administration Console are disabled.

Name: myrealm The name of this security realm. [More Info...](#)

Security Model Default: DD Only Specifies the default security model for Web applications or EJBs that are secured by this security realm. You can override this default during deployment. [More Info...](#)

Combined Role Mapping Enabled Determines how the role mappings in the Enterprise Application, Web application, and EJB containers interact. This setting is valid only for Web applications and EJBs that use the Advanced security model and that initialize roles from deployment descriptors. [More Info...](#)

Use Authorization Providers to Protect JMX Access Configures the WebLogic Server MBean servers to use the security realm's Authorization providers to determine whether a JMX client has permission to access an MBean attribute or invoke an MBean operation. [More Info...](#)

5. Click on New for creating new user.

ORACLE WebLogic Server® Administration Console

Home > Summary of Security Realms > myrealm > Users and Groups

Settings for myrealm

Configuration **Users and Groups** Roles and Policies Credential Mappings Providers Migration

Users Groups

This page displays information about each user that has been configured in this security realm.

Customize this table

Users

New Delete Showing 1 to 9 of 9 Previous | Next

Name	Description	Provider
Administrator		DefaultAuthenticator
BISystemUser	BI System User	DefaultAuthenticator

6. Enter the Name i.e username. Enter the 'password' and 'confirm password' and next click on OK.

Home Log Out Preferences Record Help Welcome, user2 Connected to: bifoundation_domain

Home > Summary of Security Realms > myrealm > Users and Groups

Create a New User

OK Cancel

User Properties

The following properties will be used to identify your new User.
* Indicates required fields

What would you like to name your new User?

* **Name:**

How would you like to describe the new User?

Description:

Please choose a provider for the user.

Provider:

The password is associated with the login name for the new User.

* **Password:**

* **Confirm Password:**

OK Cancel

7. Once you are done you will be redirected to users window.
8. Click on 'weblogic' user that you created to assign groups to that user.

Home Log Out Preferences Record Help Welcome, user2 Connected to: bifoundation_domain

Home > Summary of Security Realms > myrealm > Users and Groups

Messages

✔ User created successfully

Settings for myrealm

Configuration **Users and Groups** Roles and Policies Credential Mappings Providers Migration

Users Groups

This page displays information about each user that has been configured in this security realm.

Customize this table

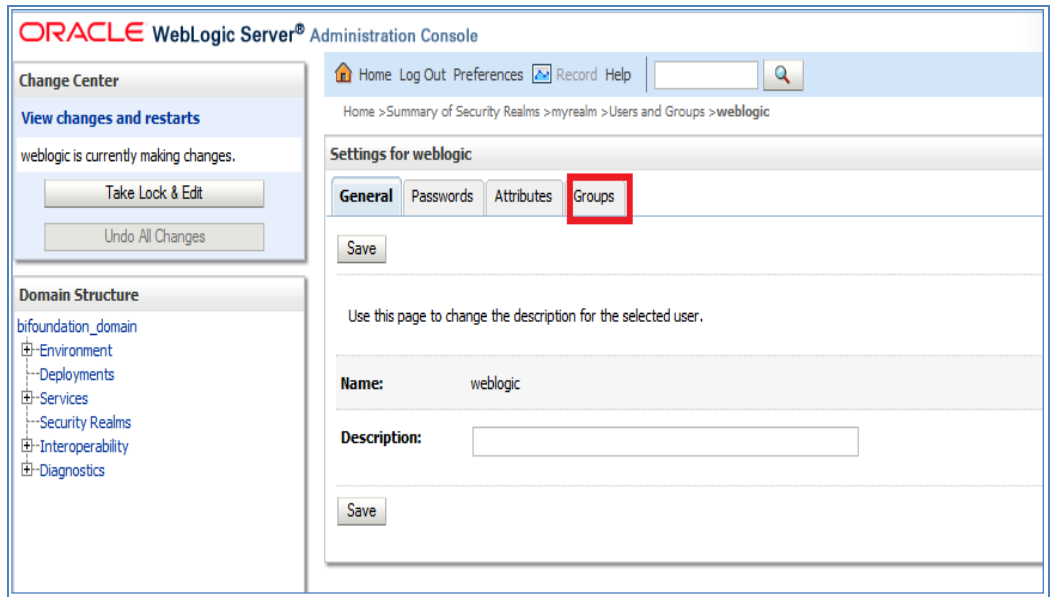
Users

New Delete Showing 1 to 10 of 10 Previous | Next

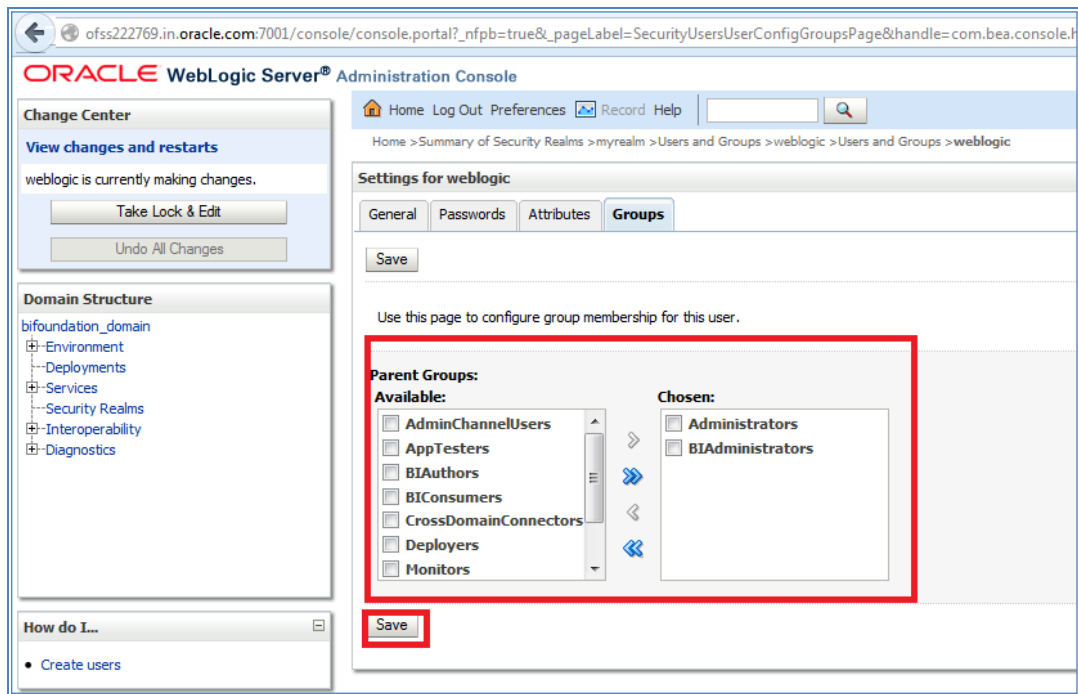
Name	Description	Provider
Administrator		DefaultAuthenticator
BISystemUser	BI System User	DefaultAuthenticator
fcuser		DefaultAuthenticator
fcuser1		DefaultAuthenticator
OracleSystemUser	Oracle application software system user.	DefaultAuthenticator
user1		DefaultAuthenticator
user2		DefaultAuthenticator
user3		DefaultAuthenticator
user4		DefaultAuthenticator
weblogic		DefaultAuthenticator

New Delete Showing 1 to 10 of 10 Previous | Next

9. Click on 'Groups' tab.



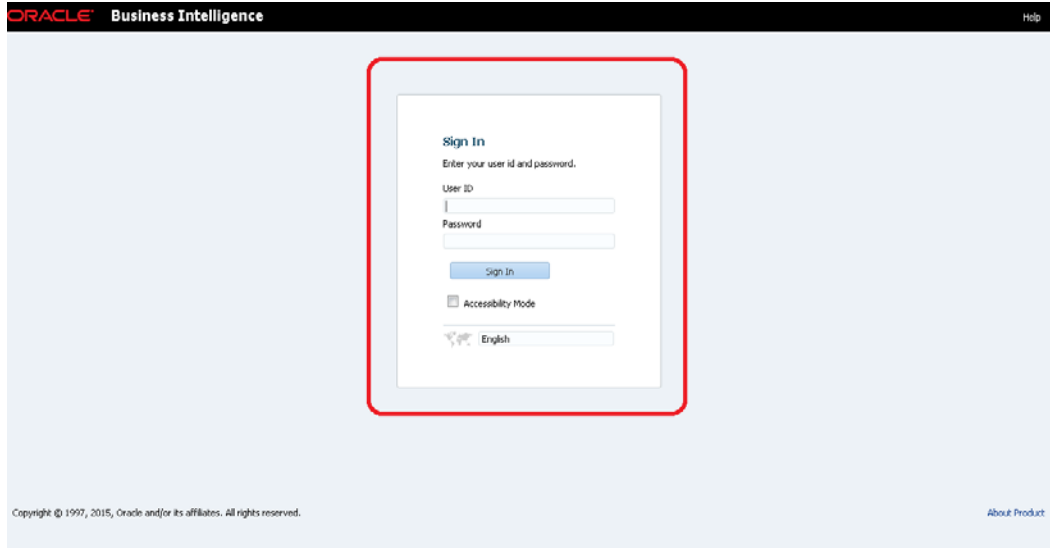
10. Assign the groups 'Administrators' and 'BIAdministrators' groups to **weblogic** user and click 'Save.'



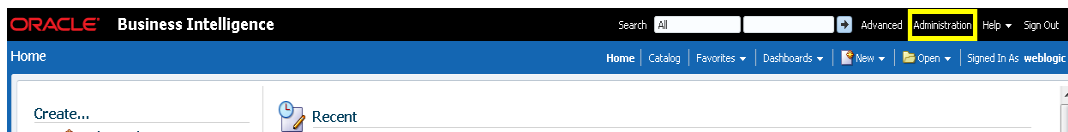
This completes user creation.
You can logout from here.

1.3 Steps to implement access restrictions to user

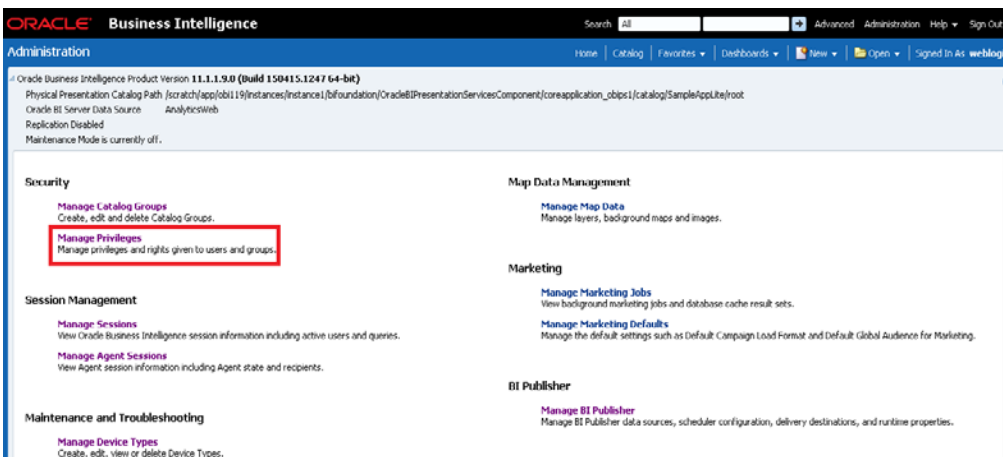
1. Login to OBIEE analytics URL with admin user credentials.



2. Once logged in click on Administration link.



3. Click on 'Manage Privileges.'



4. Click on 'BI Consumer Role' link for 'Catalog Preview UI' access as shown here:

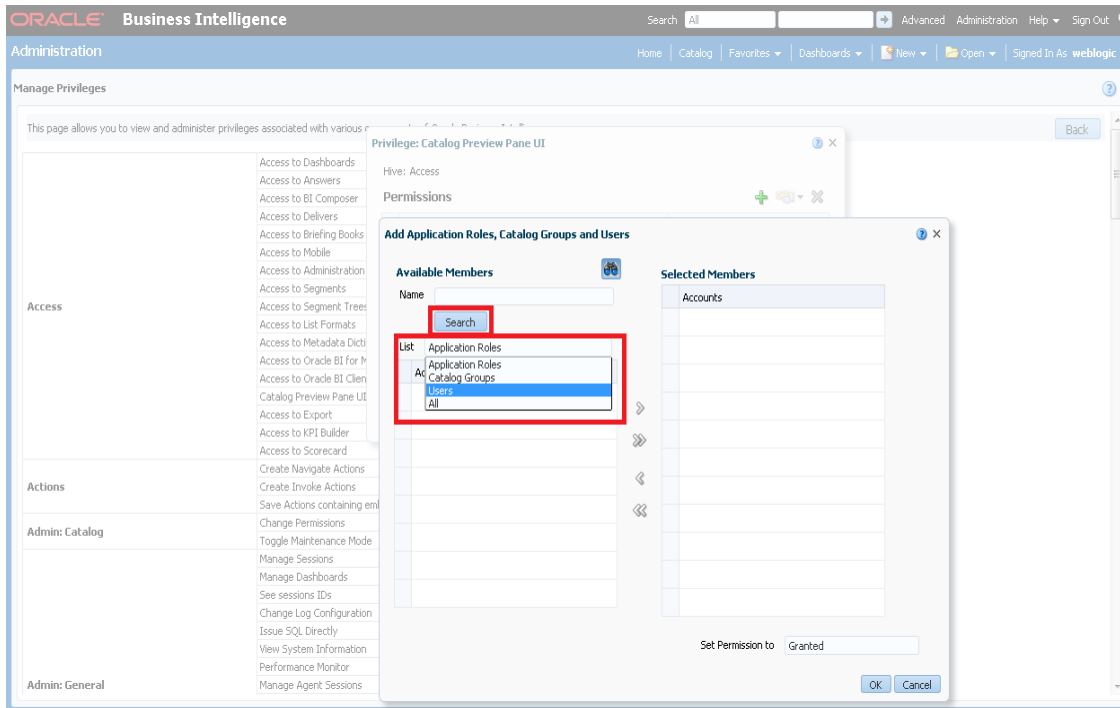
This page allows you to view and administer privileges associated with various components of Oracle Business Intelligence.

Access	Access to Dashboards	BI Consumer Role
	Access to Answers	BI Author Role
	Access to BI Composer	BI Author Role
	Access to Delivers	BI Author Role
	Access to Briefing Books	BI Consumer Role
	Access to Mobile	BI Consumer Role
	Access to Administration	BI Administrator Role
	Access to Segments	BI Consumer Role
	Access to Segment Trees	BI Author Role
	Access to List Formats	BI Author Role
	Access to Metadata Dictionary	BI Author Role
	Access to Oracle BI for Microsoft Office	BI Consumer Role
	Access to Oracle BI Client Installer	BI Consumer Role
	Catalog Preview Pane UI	BI Consumer Role
	Access to Export	BI Consumer Role
Access to KPI Builder	BI Author Role	
Access to Scorecard	BI Consumer Role	

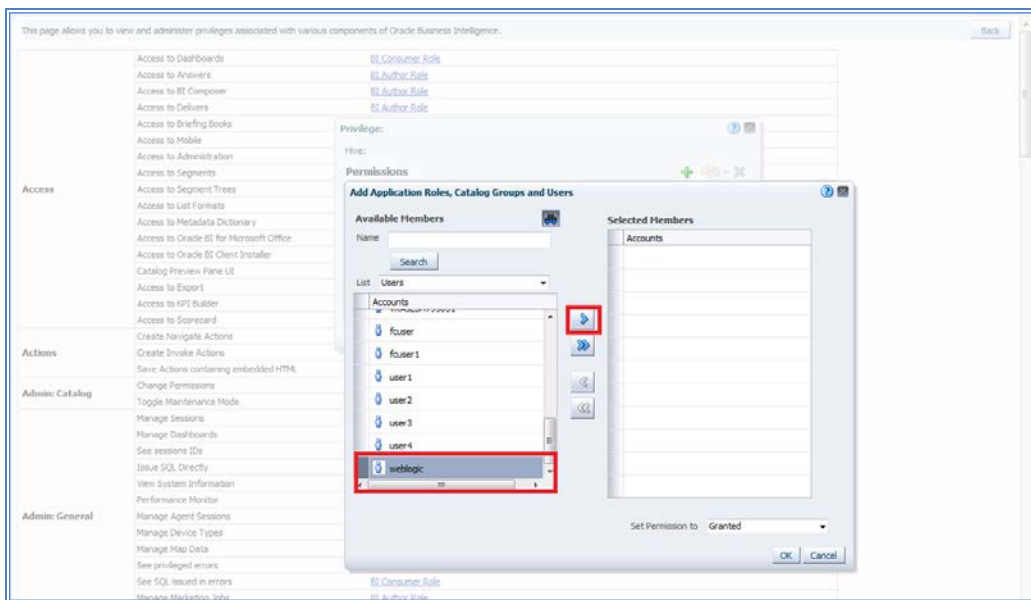
5. Next click on '+' symbol

The screenshot shows the Oracle Business Intelligence Administration console. The main page is titled 'Manage Privileges' and lists various components under the 'Access' category. A modal window titled 'Privilege: Catalog Preview Pane UI' is open, showing a table with columns 'Accounts' and 'Permissions'. The 'Accounts' column contains 'BI Consumer Role' and the 'Permissions' column contains 'Granted'. A red box highlights the '+' icon in the top right corner of the modal window, indicating the next step in the process.

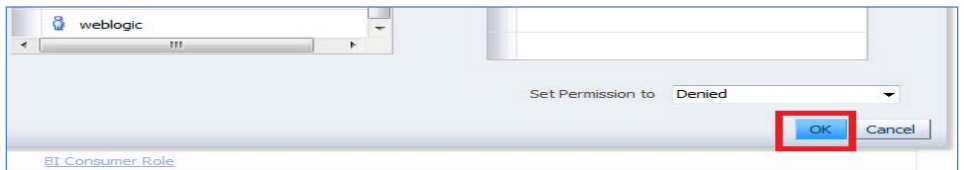
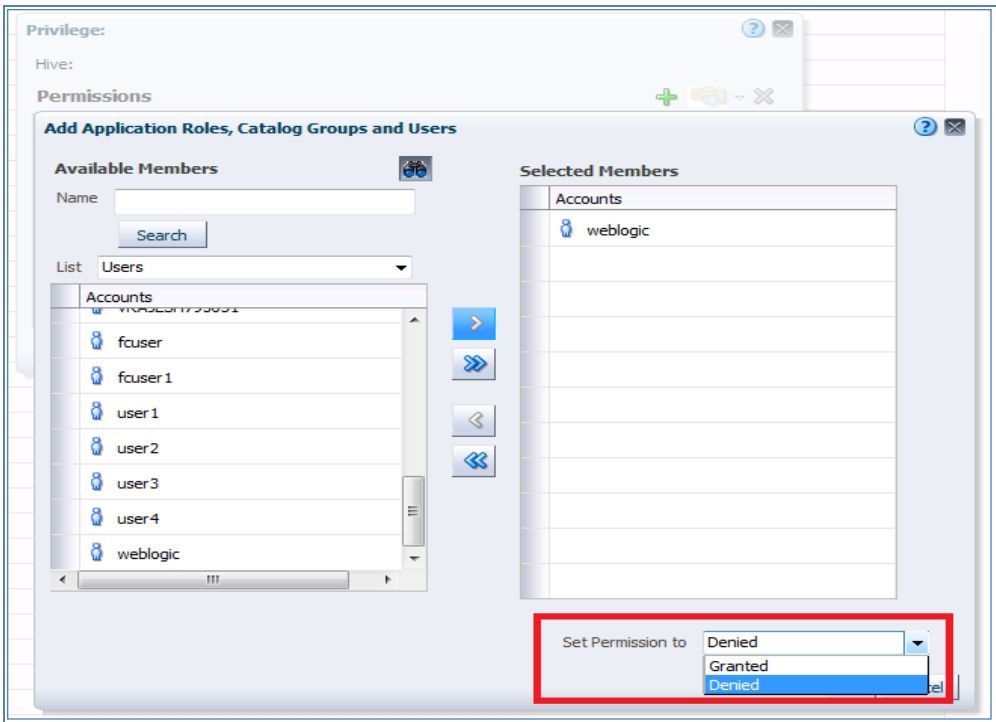
6. Select users from the drop-down shown and click on 'Search'.



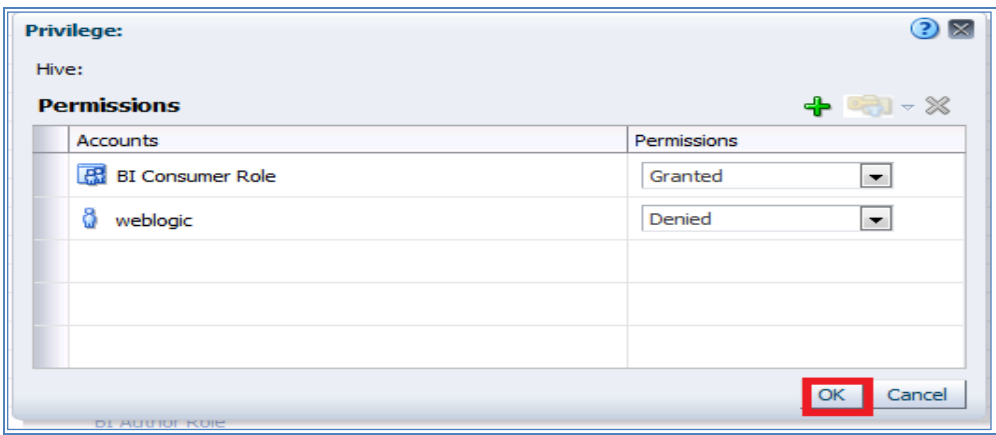
7. Select 'weblogic' user and click on the arrow to move to Selected Members



8. Now set the Permission to Denied and click Ok



9. Again Press 'Ok'.



10. Once done you will see that user is denied to the particular access as shown here

This page allows you to view and administer privileges associated with various components of Oracle Business Intelligence.

Access	Access to Dashboards	BI Consumer Role
	Access to Answers	BI Author Role
	Access to BI Composer	BI Author Role
	Access to Delivers	BI Author Role
	Access to Briefing Books	BI Consumer Role
	Access to Mobile	BI Consumer Role
	Access to Administration	BI Administrator Role
	Access to Segments	BI Consumer Role
	Access to Segment Trees	BI Author Role
	Access to List Formats	BI Author Role
	Access to Metadata Dictionary	BI Author Role
	Access to Oracle BI for Microsoft Office	BI Consumer Role
	Access to Oracle BI Client Installer	BI Consumer Role
	Catalog Preview Pane UI	BI Consumer Role Denied: weblogic
Access to Export	BI Consumer Role	
Access to KPI Builder	BI Author Role	
Access to Scorecard	BI Consumer Role	

11. Similarly set user rights for 'weblogic' user for all the below marked access restrictions

Administration Manage Privileges

This page allows you to view and administer privileges associated with various components of Oracle Business Intelligence.

Access	Access to Dashboards	BI Consumer Role
	Access to Answers	BI Author Role
	Access to BI Composer	BI Author Role
	Access to Delivers	BI Author Role
	Access to Briefing Books	BI Consumer Role
	Access to Mobile	BI Consumer Role
	Access to Administration	BI Administrator Role Denied: weblogic
	Access to Segments	BI Consumer Role Denied: weblogic
	Access to Segment Trees	BI Author Role
	Access to List Formats	BI Author Role
	Access to Metadata Dictionary	BI Author Role
	Access to Oracle BI for Microsoft Office	BI Consumer Role
	Access to Oracle BI Client Installer	BI Consumer Role Denied: weblogic
	Catalog Preview Pane UI	BI Consumer Role Denied: weblogic
Access to Export	BI Consumer Role	
Access to KPI Builder	BI Author Role	
Access to Scorecard	BI Consumer Role	

Actions	Create Navigate Actions	BI Consumer Role Denied: weblogic
	Create Invoke Actions	BI Author Role
	Save Actions containing embedded HTML	BI Administrator Role

Administration Manage Privileges

Briefing Book	Access to Microsoft Energy	BI Administrator Role
	Add To or Edit a Briefing Book	BI Author Role
	Download Briefing Book	BI Consumer Role Denied: weblogic
Catalog	Add to snapshot briefing book	BI Consumer Role
	Personal Storage (My Folders and My Dashboard)	BI Consumer Role Denied: weblogic
	Reload Metadata	BI Administrator Role
	See Hidden Items	BI Author Role
Conditions	Create Folders	BI Author Role
	Archive Catalog	BI Administrator Role
	Unarchive Catalog	BI Administrator Role
	Upload Files	BI Administrator Role
	Perform Global Search	BI Author Role
	Perform Extended Search	BI Author Role
Dashboards	Create Conditions	BI Author Role
	Save Customizations	BI Consumer Role Denied: weblogic
	Assign Default Customizations	BI Author Role Denied: weblogic
	Create Bookmark Links	BI Consumer Role Denied: weblogic
	Create Prompted Links	BI Consumer Role Denied: weblogic
	Export Entire Dashboard To Excel	BI Consumer Role
	Export Single Dashboard Page To Excel	BI Consumer Role

Administration		Home	Catalog	Favorites	Dashboards
Manage Privileges					
Home and Header	Access Home Page	BI Consumer Role	Denied:	weblogic	
	Access Catalog UI	BI Consumer Role	Denied:	weblogic	
	Access Catalog Search UI	BI Consumer Role	Denied:	weblogic	
	Simple Search Field	BI Consumer Role			
	Advanced Search Link	BI Consumer Role	Denied:	weblogic	
	Open Menu	BI Consumer Role	Denied:	weblogic	
	New Menu	BI Consumer Role	Denied:	weblogic	
	Help Menu	BI Consumer Role	Denied:	weblogic	
	Dashboards Menu	BI Consumer Role	Denied:	weblogic	
	Favorites Menu	BI Consumer Role			
	My Account Link	BI Consumer Role	Denied:	weblogic	
	Custom Links	BI Consumer Role	Denied:	weblogic	
	My Account	Access to My Account	BI Consumer Role	Denied:	weblogic
Change Preferences		BI Consumer Role			
Change Delivery Options		BI Consumer Role			

- To give access follow the same steps as above but select 'Granted' in the Step: 8.
- Similarly set user rights for 'weblogic' user for all the below marked Privileges

Administration		Home	Catalog	Favorites	Dashboards	New	Op
Manage Privileges							
View Ticker	Add/Edit TickerView	BI Author Role					
View Title	Add/Edit TitleView	BI Author Role					
View Treemap	Add/Edit TreemapView	BI Author Role					
View Trellis	Add/Edit TrellisView	BI Author Role					
View View Selector	Add/Edit View SelectorView	BI Author Role					
Write Back	Write Back to Database	weblogic	Denied:	Authenticated User			
	Manage Write Back	BI Administrator Role		weblogic			

Administration		Home
Manage Privileges		
	Execute Direct Database Analysis	BI Administrator Role weblogic
Delivers	Create Agents	BI Author Role
	Publish Agents for Subscription	BI Author Role
	Deliver Agents to Specific or Dynamically Determined Users	BI Administrator Role
	Chain Agents	BI Author Role
	Modify Current Subscriptions for Agents	BI Administrator Role
	Act As Proxy	Denied: Authenticated User
Proxy	Access to RSS Feeds	BI Consumer Role
	Create/Edit Scorecards	BI Author Role
Scorecard	View Scorecards	BI Consumer Role
	Create/Edit Objectives	BI Author Role
	Create/Edit Initiatives	BI Author Role
	Create Views	BI Author Role
	Create/Edit Causes And Effects Linkages	BI Author Role
	Create/Edit Perspectives	BI Author Role
	Add Annotations	BI Consumer Role
	Override Status	BI Consumer Role
	Create/Edit KPIs	BI Author Role
	Write Back to Database for KPI	BI Consumer Role weblogic
	Add Scorecard Views To Dashboards	BI Consumer Role

This way we can create user and give specific grants and also deny the access to the OBIEE options.

1.4 Update the User Id in CSTB_PARAM

In CSTB_PARAM , update the name of the user in PARAM_VAL for PARAM_NAME "OBIEE_USER"

Eg: weblogic

1.5 Integration of OBIEE into Flexcube using IFrame

1. Locate the instanceconfig.xml file at the below location:

[OBIEE_HOME]\instances\instance1\config\OracleBIPresentationServicesComponent\coreapplication_obips1\

Update the instanceconfig.xml file to add the highlighted entry within the "security" tag

```
<Security>
<!--Changes to Integration of OBIEE to Flexcube Starts-->
<InIFrameRenderingMode>allow</InIFrameRenderingMode>
<!--Changes to Integration of OBIEE to Flexcube Ends-->
<!--This Configuration setting is managed by Oracle Enterprise Manager Fusion Middleware Control-->
<ClientSessionExpireMinutes>210</ClientSessionExpireMinutes>
</Security>
```

2. Edit the 'web.xml' file at the following location:

[OBIEE_HOME]\oracleBI1\bifoundation\web\app\WEB-INF\

Add the highlighted text into the "web.xml"

```
<servlet-mapping>
    <servlet-name>SAWBridge</servlet-name>
    <url-pattern>/saw.dll/*</url-pattern>
</servlet-mapping>

<servlet-mapping>
    <servlet-name>RelatedContent</servlet-name>
    <url-pattern>/RelatedContent</url-pattern>
</servlet-mapping>

<context-param>
    <param-name>oracle.adf.view.rich.security.FRAME_BUSTING</param-name>
    <param-value>never</param-value>
</context-param>

<login-config>
    <auth-method>CLIENT-CERT</auth-method>
</login-config>
```

3. Now restart all the Bi components using EM Server.

1.6 Writeback XML Deployment

1. Take the Two writeback XMLs

(i) ICDSKTOP_COLL.xml

(ii) ICDSKTOP_LIAB.xml

They are available in SVN path :

http://ofssfcdevsvn.in.oracle.com:18080/svn/FLEXCUBE_ELCM/branches/FCELCM_12.0.1.0
.0/Soft/MAIN/EL/OBIEE_11g/WritebackXML

2. The XML's should be placed in OBIEE server in the paths mentioned below:

[OBIEE_HOME]/instances/instance1/bifoundation/OracleBIPresentationServicesComponent/
coreapplication_obips1/analyticsRes/customMessages

[OBIEE_HOME]/Oracle_BI1/bifoundation/web/msgdb/customMessages

Please create the customMessages folder as by default they will not be there.

3. Now restart the BI Components from EM Server.

1.7 Server file changes

1. Go to the the path mentioned below
[OBIEE_HOME]/instances/instance1/config/OracleBIServerComponent/coreapplication_obis
1
2. Open NQSConfig file and make the EVALUATE_SUPPORT_LEVEL = 2

```
# EVALUATE_SUPPORT_LEVEL:  
# 1: evaluate is supported for users with manageRepositorie  
# 2: evaluate is supported for any user.  
# other: evaluate is not supported if the value is anything  
  
EVALUATE_SUPPORT_LEVEL = 2;  
  
FMW_SECURITY_SERVICE_URL = "http://10.184.149.60:9704"; #  
FMW_SECURITY_SERVICE_MAX_NUMBER_OF_CONNECTIONS = 2000;  
FMW_SECURITY_SERVICE_MAX_NUMBER_OF_RETRIES = 0;  
# FMW_SECURITY_SERVICE_RETRY_EXCEPTION_SUBSTRING = "forcibl  
FMW_UPDATE_ROLE_AND_USER_REF_GUIDS = NO;
```

3. Go to the path mentioned below
[OBIEE_HOME]/instances/instance1/config/OracleBIPresentationServicesComponent/coreap
plication_obips1
4. Open instanceconfig file and add the following line after </BIComposer>

<LightWriteback>true</LightWriteback>

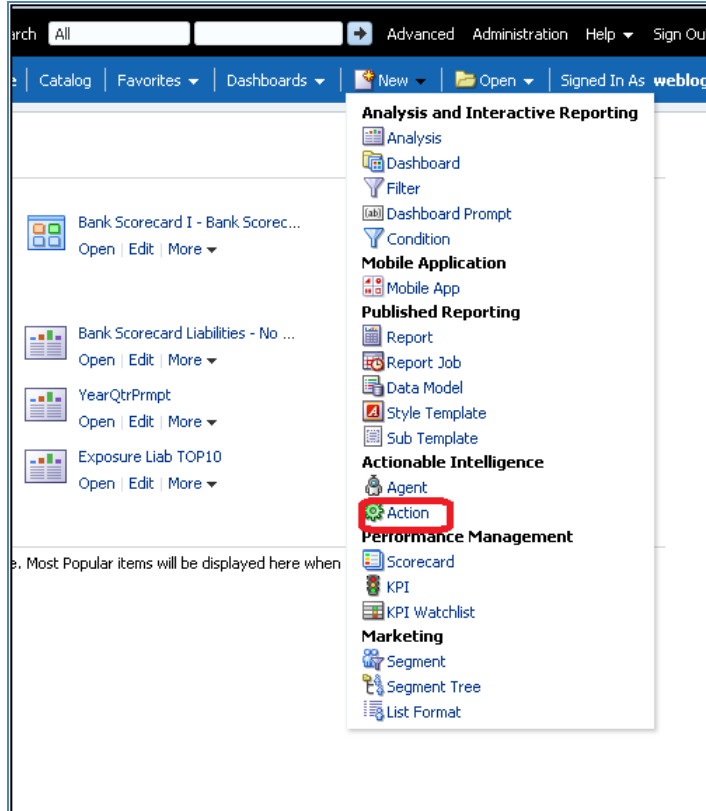
For Example:

```
<BIComposer>  
<!--This Configuration setting is managed by Oracle Enterprise Ma  
<Enabled>true</Enabled>  
</BIComposer>  
<LightWriteback>true</LightWriteback>  
<DeploymentProfile>  
<!--This Configuration setting is managed by Oracle Enterprise Ma  
<DeploymentMode>onsite</DeploymentMode>  
</DeploymentProfile>  
<AsyncLogon>
```

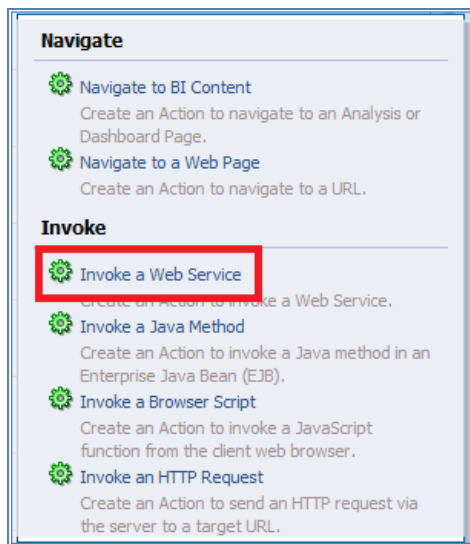

1.8 Creation and Maintenance of BPEL url.

1.8.1 Steps for creation of BPEL url.

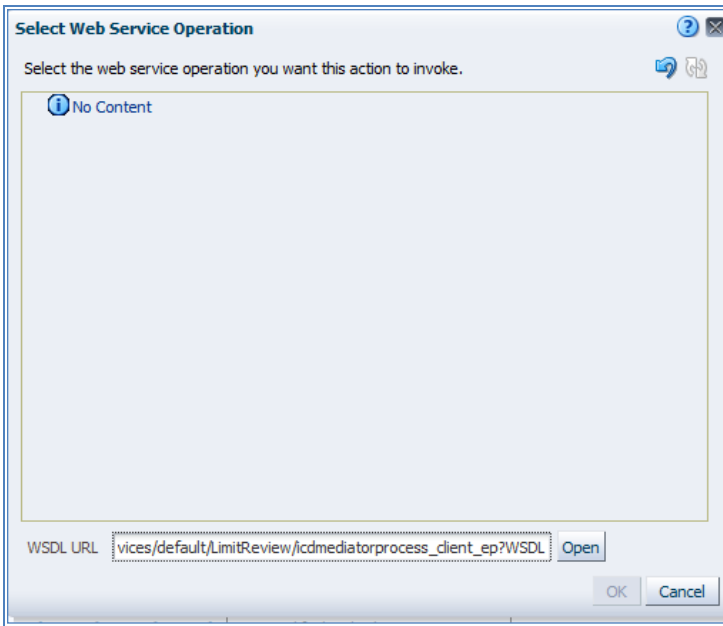
1. To create a BPEL task select the 'Action' from 'New'.



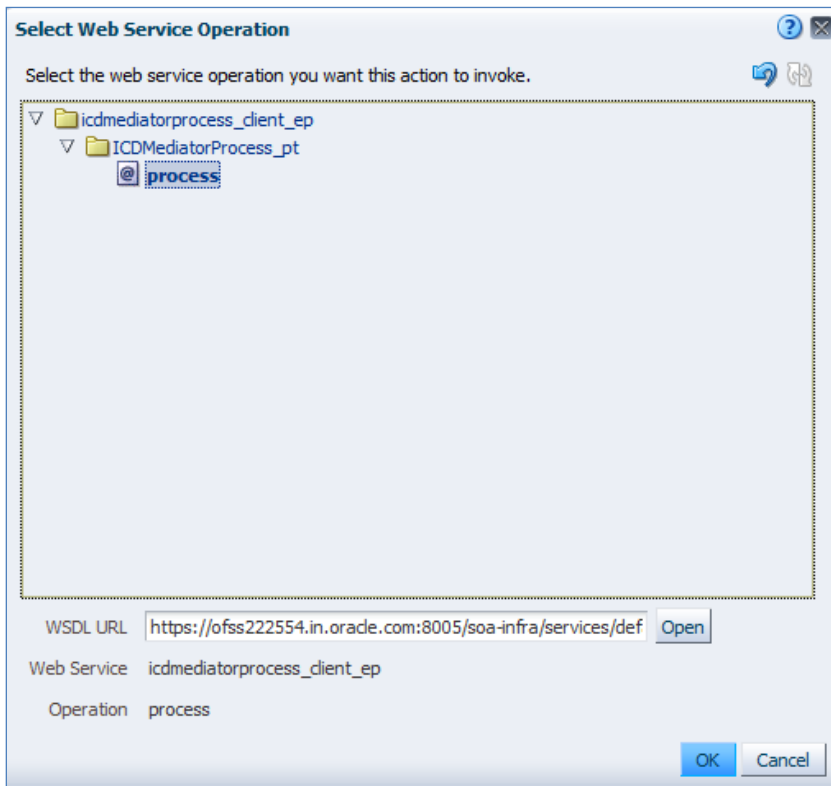
2. Select 'Invoke a Web Service'.



3. Now Enter the WSDL URL and click Open.

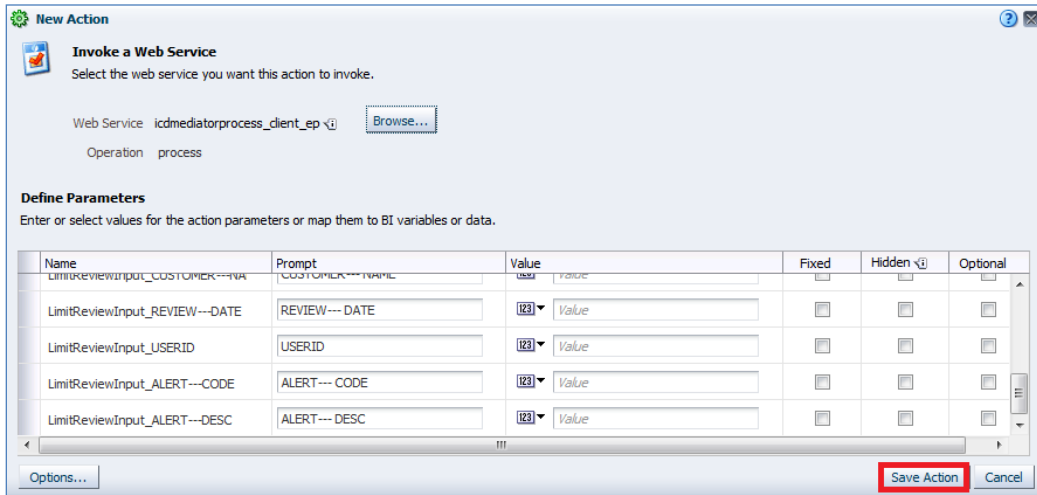


4. Navigate to the process and select Ok button.



5. Now the screen shows as follows.

Only the 'Alert Desc' appears to the user, so Change the name of that prompt and 'Save Action'.

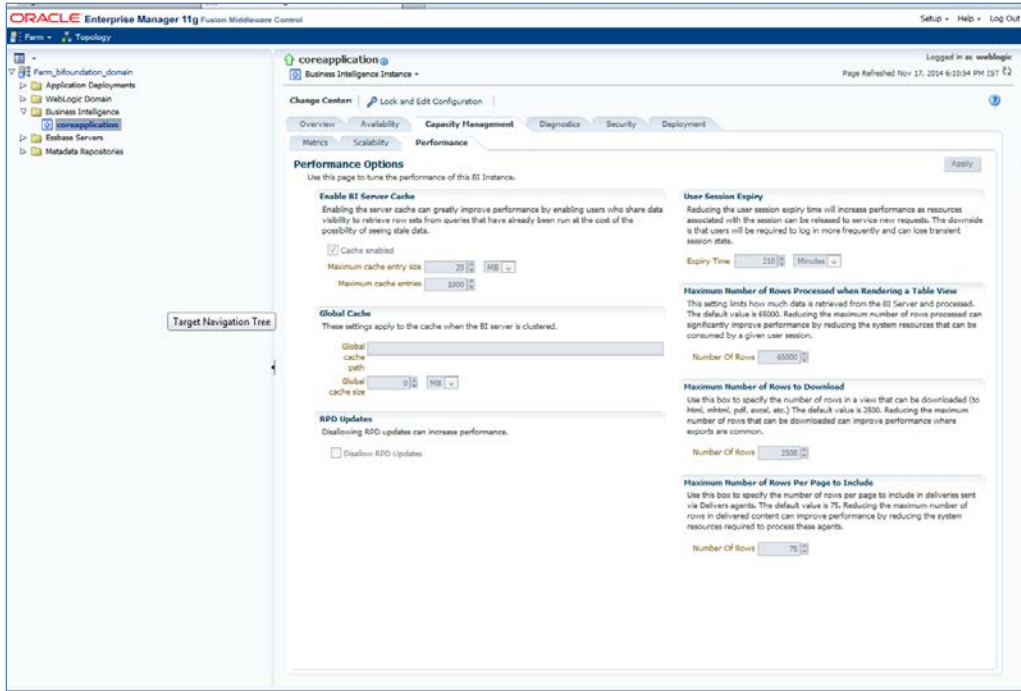


1.8.2 Steps for Maintenance of BPEL url.

1. Open the already existing action from the catalog.
2. You will be prompted the screen that is present in step: 5.
3. Now click Browse and follow the steps from Step: 3 until end.

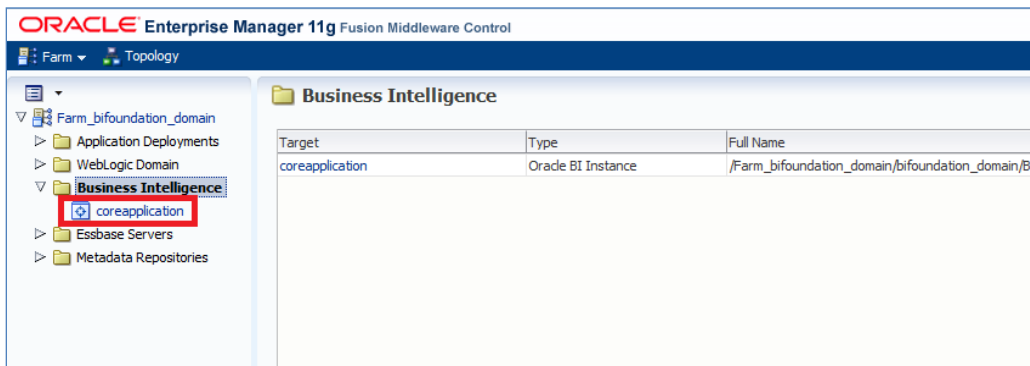
1.9 Disable Cache

1. Login to Enterprise manager,
2. Go to Farm_bifoundation_domain → Business Intelligence → coreapplication on the left side.
3. Click on it and select 'Performance' Tab.
4. Under Enable BI Server Cache , Cache Enabled should be unchecked.

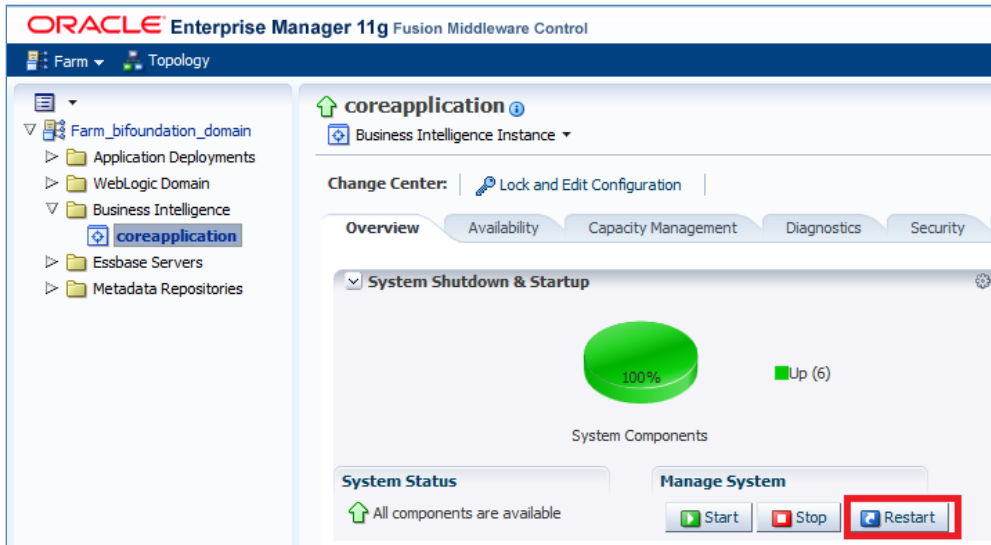


1.10 Restarting BI Components using EM Server

1. Login into EM server of OBIEE.
2. Go to coreapplicaitons in Business Intelligence option.



3. The below screen opens.



4. Click 'Restart'.
5. Click 'Yes'.



Oracle FLEXCUBE OBIEE Reports
[May] [2020]
Version 14.4.0.0.0

Oracle Financial Services Software Limited
Oracle Park
Off Western Express Highway
Goregaon (East)
Mumbai, Maharashtra 400 063
India

Worldwide Inquiries:
Phone: +91 22 6718 3000
Fax: +91 22 6718 3001
<https://www.oracle.com/industries/financial-services/index.html>

Copyright © [2007], [2020], Oracle and/or its affiliates. All rights reserved.

Oracle and Java are registered trademarks of Oracle and/or its affiliates. Other names may be trademarks of their respective owners.

U.S. GOVERNMENT END USERS: Oracle programs, including any operating system, integrated software, any programs installed on the hardware, and/or documentation, delivered to U.S. Government end users are "commercial computer software" pursuant to the applicable Federal Acquisition Regulation and agency-specific supplemental regulations. As such, use, duplication, disclosure, modification, and adaptation of the programs, including any operating system, integrated software, any programs installed on the hardware, and/or documentation, shall be subject to license terms and license restrictions applicable to the programs. No other rights are granted to the U.S. Government.

This software or hardware is developed for general use in a variety of information management applications. It is not developed or intended for use in any inherently dangerous applications, including applications that may create a risk of personal injury. If you use this software or hardware in dangerous applications, then you shall be responsible to take all appropriate failsafe, backup, redundancy, and other measures to ensure its safe use. Oracle Corporation and its affiliates disclaim any liability for any damages caused by use of this software or hardware in dangerous applications.

This software and related documentation are provided under a license agreement containing restrictions on use and disclosure and are protected by intellectual property laws. Except as expressly permitted in your license agreement or allowed by law, you may not use, copy, reproduce, translate, broadcast, modify, license, transmit, distribute, exhibit, perform, publish or display any part, in any form, or by any means. Reverse engineering, disassembly, or decompilation of this software, unless required by law for interoperability, is prohibited.

The information contained herein is subject to change without notice and is not warranted to be error-free. If you find any errors, please report them to us in writing.

This software or hardware and documentation may provide access to or information on content, products and services from third parties. Oracle Corporation and its affiliates are not responsible for and expressly disclaim all warranties of any kind with respect to third-party content, products, and services. Oracle Corporation and its affiliates will not be responsible for any loss, costs, or damages incurred due to your access to or use of third-party content, products, or services.